



Cannabis Potency Results

Date: 27-Feb-15, 20:16:06

Client:

Sample: White x Napali

Type:

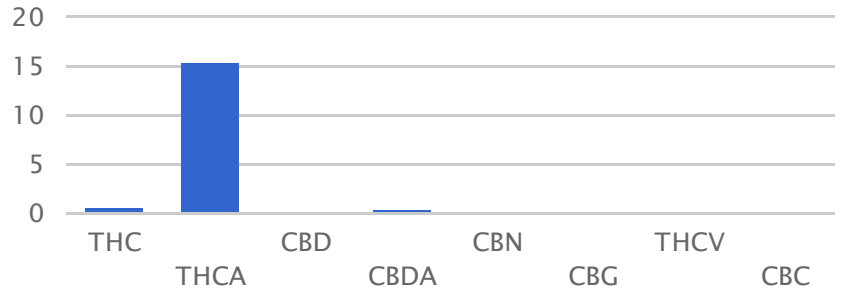
Notes:

www.TestedLabs.com

207-618-9333

(http://www.TestedLabs.com)

Cannabinoid	Result
THC	0.62 %
THCA	15.39 %
CBD	0.15 %
CBDA	0.42 %
CBN	0.21 %
CBG	0 %
THCV	0.08 %
CBC	0.21 %
Total CBD	0.57 %
Total THC	16.01 %
Total Cannabinoid Results	16.79 %



- TestedLabs has tested your sample on a calibrated high performance liquid chromatography (HPLC) system. This method of testing allows us to measure both the acid (raw) and neutral (decarboxylated) states of the major cannabinoids in medical cannabis flowers and products.
- Liquid sample results are reported in milligrams per milliliter (mg/ml). All other samples are reported as percent per dry weight.
- 1ml = approx 1 standard dropper full or 20 drops. 5 ml = 1 teaspoon.

- Please use a graduated dropper or oral syringe for accurate dosing.
- Please follow the dosage recommendations made by your medical provider.
- Heat activation of cannabis products converts THCA to THC and CBDA to CBD in a time and temperature dependent manner. THCa typically converts fully to THC at 252 Fahrenheit for 27 minutes.