

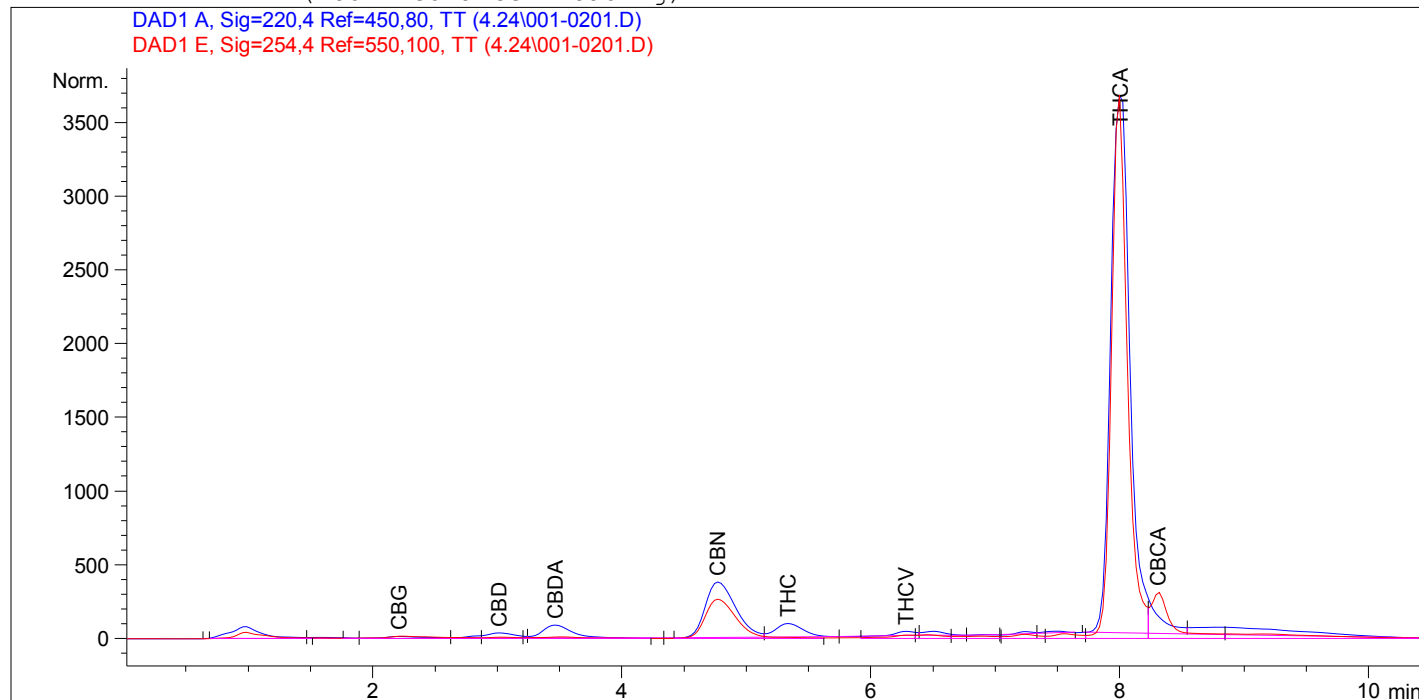
```

=====
Injection Date   : 4/24/2014 3:00:24 PM           Seq. Line :    2
Sample Name     : R1 Silkx#1                     Location  : Vial 1
Acq. Operator  : Clayton Sulak                   Inj       :    1
                                                    Inj Volume: 5 µl

Acq. Method    : C:\HPCHEM\1\DATA12~1.14\RUN1.M
Last changed   : 4/24/2014 3:02:41 PM by Clayton Sulak
                (modified after loading)

Analysis Method : C:\HPCHEM\1\DATA12~1.14\RUN1.M
Last changed   : 4/24/2014 4:48:28 PM by Clayton Sulak
                (modified after loading)
=====

```



```

=====
ESTD Percent Report
=====

```

```

Sorted By           :      Retention Time
Calib. Data Modified :      4/24/2014 3:52:34 PM
Multiplier          :      1.0000
Dilution            :      20.0000
Sample Amount       :      1.33000e-1 [mg/ml, ]
Use Multiplier & Dilution Factor with ISTDs

```

```

Signal 1: DAD1 A, Sig=220,4 Ref=450,80, TT
Signal 2: DAD1 E, Sig=254,4 Ref=550,100, TT

```

RetTime [min]	Sig	Type	Height [mAU]	Amt/Height	Amount %	Grp	Name
2.210	1	VV	14.21980	3.23180e-8	6.91060e-3		CBG
3.011	1	VV	37.64091	4.17954e-7	0.236574		CBD
3.463	1	VP	90.51646	3.21071e-7	0.437026		CBDA
4.770	1	VV	378.38004	2.37309e-7	1.350269		CBN
5.333	1	VP	92.27744	3.83568e-7	0.532250		THC
6.281	1	VV	30.98902	2.37990e-7	0.110903		THCV
8.005	1	BV	3662.68115	3.09984e-7	17.073282		THCA
8.309	2	VB	120.47469	2.37445e-7	0.430167		CBCA

```
Totals :                               20.177382
```

Results obtained with enhanced integrator!

1 Warnings or Errors :

Warning : Calibration warnings (see calibration table listing)

=====
*** End of Report ***